

# SEM-Closure™

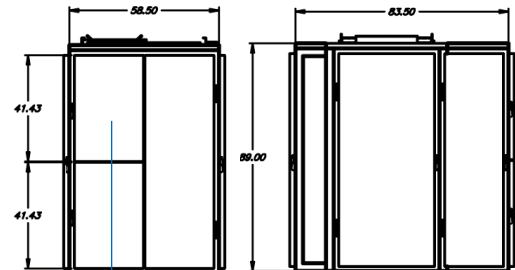
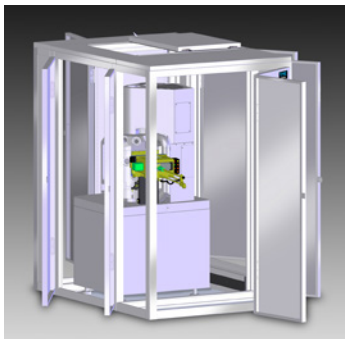
## For total environmental protection of scanning electron microscopes (SEMs)

SEM-Closure™ is an acoustic enclosure designed specifically for scanning electron microscopes (SEMs). Together with TMC's SEM-Base™ floor platform and Mag-NetX™ magnetic field cancellation, SEM-Closure™ provides a total environmental solution to protect sensitive SEMs from all outside interference.

SEM-Closure is designed to accommodate SEM-Base, an active piezoelectric vibration cancellation floor platform, and Mag-NetX in a sealed and temperature-controlled acoustical chamber – protecting the SEM from vibration, magnetic field disturbances, and acoustic noise.

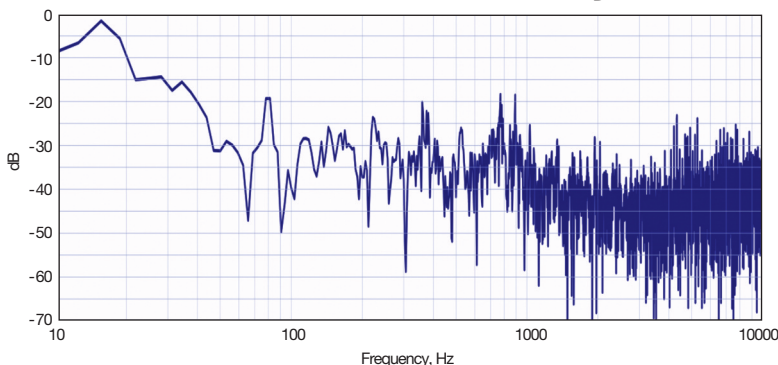
Integration of the three systems ensures proper fit and compatibility. The vibration isolation system can be inside the enclosure itself. Also,

the SEM-Closure frame is designed to accommodate Mag-NetX Helmholtz coils as well as the acoustic panels, eliminating the need for a second frame to house the coils. SEM-Closure provides multiple access points, a heat dissipation system, and provisions for tool plumbing and cabling within the system.



Optional quarter-panel door for quick and easy access

## Acoustic Transmissibility



*This measurement was taken during a non-optimized, factory floor installation without proper mounting of the SEM-Closure to the floor. Even better performance will be achieved in lab floor and cleanroom floor installations.*

*(continued on back side)*

## SEM-Closure™ Ordering Chart

Catalog No.	Width	Depth	Height
30-101-00-00	50	62.5	92.5

NOTE:  
Change suffix -00 to -12 for 12 in. side module, or -24 for 24 in. side module.  
First two-digit suffix is for the left side, second two-digit is for the right side.  
Model shown is number 30-101-12-24.

[www.gmp.ch](http://www.gmp.ch)

GMP SA  
GMP SA

Main office: Avenue des Baumettes 17  
Büro Zürich: Dübendorfstrasse 11a

CH-1020 Renens  
CH-8117 Fällanden

Tél. 021 633 21 21  
Tel. 044 825 34 00

Fax. 021 633 21 29  
Fax. 044 825 34 01

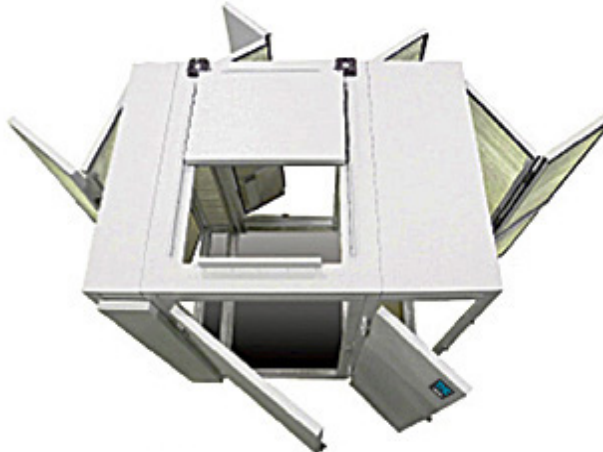
info@gmp.ch  
info@gmp.ch



Main door is 36" wide allowing full access to front of SEM. 24" side module also includes a door on front side.

NEW options include:

- multiple front door
- direct vent
- additional cable management features



Several hinged doors allow easy access to any side of the SEM for sample preparation, adjustment of accessories and maintenance. Bi-fold doors on sides and rear help minimize clearance requirements. Optional quarter-panel door for quick and easy access. Model shown is number 30-202-12-24.



Top panel includes easy-open, space-saving hatch door for access to top of SEM. Cam-Lock ensures tight seal.



All doors include easy-to-open latch, and tight seal when closed. All panels constructed of TMC proprietary acoustic layering with powder coat steel exterior.